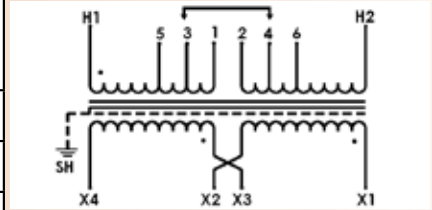




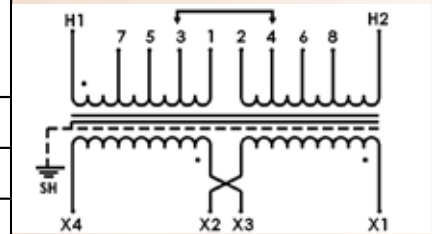
Single Phase TP-1 Compliant Transformers

240 x 480 Volt Primary, 120 / 240 Volt Secondary, 60Hz									
kVA	Catalog Number	Taps	Mtg. Type W = Wall F = Floor	Conn. Dia.	Height A	Width B	Depth C	Est. Ship Weight (Lbs.)	Wall Brackets (Optional)
15	41-1470SH	2 - 2 ½% FCAN 2 - 2 ½% FCBN	W or F	1	23.5	18.8	18.5	224	BR-890
25	41-1475SH	2 - 2 ½% FCAN 2 - 2 ½% FCBN	W or F	1	30.2	21.7	19.5	318	BR-890
37.5	41-1680SH	2 - 2 ½% FCAN 4 - 2 ½% FCBN	W or F	2	32.0	27.3	26.3	433	BR-892
50	41-1685SH	2 - 2 ½% FCAN 4 - 2 ½% FCBN	W or F	2	32.0	27.3	26.3	483	BR-892
75	41-1690SH	2 - 2 ½% FCAN 4 - 2 ½% FCBN	F	2	41.0	34.3	26.8	700	N.A.
100	41-1695SH	2 - 2 ½% FCAN 4 - 2 ½% FCBN	F	2	41.0	34.3	26.8	758	N.A.



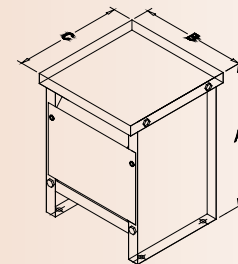
41-14XXSH Series
41-34XXSH Series
41-44XXSH Series

208 Volt Primary, 120 / 240 Volt Secondary, 60 Hz									
kVA	Catalog Number	Taps	Mtg. Type W = Wall F = Floor	Conn. Dia.	Height A	Width B	Depth C	Est. Ship Weight (Lbs.)	Wall Brackets (Optional)
15	41-3470SH	2 - 2 ½% FCAN 2 - 2 ½% FCBN	W or F	3	23.5	18.8	18.5	224	BR-890
25	41-3475SH	2 - 2 ½% FCAN 2 - 2 ½% FCBN	W or F	3	30.2	21.7	19.5	318	BR-890
37.5	41-3680SH	2 - 2 ½% FCAN 4 - 2 ½% FCBN	W or F	4	32.0	27.3	26.3	433	BR-892
50	41-3685SH	2 - 2 ½% FCAN 4 - 2 ½% FCBN	W or F	4	32.0	27.3	26.3	483	BR-892
75	41-3690SH	2 - 2 ½% FCAN 4 - 2 ½% FCBN	F	4	41.0	34.3	26.8	700	N.A.
100	41-3695SH	2 - 2 ½% FCAN 4 - 2 ½% FCBN	F	4	41.0	34.3	26.8	758	N.A.



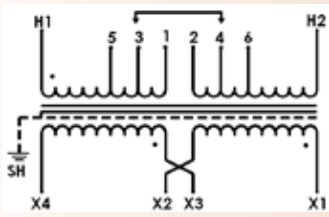
41-16XXSH Series
41-36XXSH Series
41-46XXSH Series

277 Volt Primary, 120 / 240 Volt Secondary, 60Hz									
kVA	Catalog Number	Taps	Mtg. Type W = Wall F = Floor	Conn. Dia.	Height A	Width B	Depth C	Est. Ship Weight (Lbs.)	Wall Brackets (Optional)
15	41-4470SH	2 - 2 ½% FCAN 2 - 2 ½% FCBN	W or F	5	23.5	18.8	18.5	224	BR-890
25	41-4475SH	2 - 2 ½% FCAN 2 - 2 ½% FCBN	W or F	5	30.2	21.7	19.5	318	BR-890
37.5	41-4680SH	2 - 2 ½% FCAN 4 - 2 ½% FCBN	W or F	6	32.0	27.3	26.3	433	BR-892
50	41-4685SH	2 - 2 ½% FCAN 4 - 2 ½% FCBN	W or F	6	32.0	27.3	26.3	483	BR-892
75	41-4690SH	2 - 2 ½% FCAN 4 - 2 ½% FCBN	F	6	41.0	34.3	26.8	700	N.A.
100	41-4695SH	2 - 2 ½% FCAN 4 - 2 ½% FCBN	F	6	41.0	34.3	26.8	758	N.A.



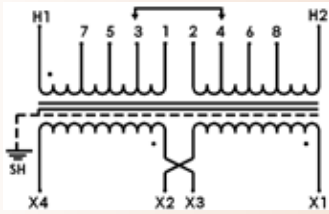
Enclosure Drawing

Wall mounting requires purchasing an optional Wall Mounting Bracket Set.
Complete electrical connections may be found on Page 16.



41-54XXSH Series
41-64XXSH Series

600 Volt Primary, 120 / 240 Volt Secondary, 60Hz									
kVA	Catalog Number	Taps	Mtg. Type W = Wall F = Floor	Conn. Dia.	Height A	Width B	Depth C	Est. Ship Weight (Lbs.)	Wall Brackets (Optional)
15	41-5470SH	2 - 2 1/2% FCAN 2 - 2 1/2% FCBN	W or F	7	23.5	18.8	18.5	224	BR-890
25	41-5475SH	2 - 2 1/2% FCAN 2 - 2 1/2% FCBN	W or F	7	30.2	21.7	19.5	318	BR-890
37.5	41-5680SH	2 - 2 1/2% FCAN 4 - 2 1/2% FCBN	W or F	8	32.0	27.3	26.3	433	BR-892
50	41-5685SH	2 - 2 1/2% FCAN 4 - 2 1/2% FCBN	W or F	8	32.0	27.3	26.3	483	BR-892
75	41-5690SH	2 - 2 1/2% FCAN 4 - 2 1/2% FCBN	F	8	41.0	34.3	26.8	700	N.A.
100	41-5695SH	2 - 2 1/2% FCAN 4 - 2 1/2% FCBN	F	8	41.0	34.3	26.8	758	N.A.

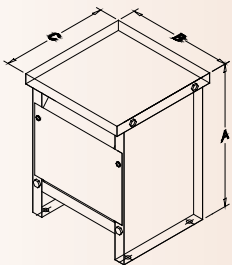


41-56XXSH Series
41-66XXSH Series

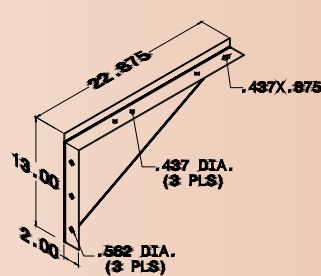
120 x 240 Volt Primary, 120 / 240 Volt Secondary, 60Hz									
kVA	Catalog Number	Taps	Mtg. Type W = Wall F = Floor	Conn. Dia.	Height A	Width B	Depth C	Est. Ship Weight (Lbs.)	Wall Brackets (Optional)
15	41-6470SH	2 - 2 1/2% FCAN 2 - 2 1/2% FCBN	W or F	9	23.5	18.8	18.5	224	BR-890
25	41-6475SH	2 - 2 1/2% FCAN 2 - 2 1/2% FCBN	W or F	9	30.2	21.7	19.5	318	BR-890
37.5	41-6680SH	2 - 2 1/2% FCAN 4 - 2 1/2% FCBN	W or F	27	32.0	37.3	26.3	433	BR-892
50	41-6685SH	2 - 2 1/2% FCAN 4 - 2 1/2% FCBN	W or F	27	32.0	27.3	26.3	483	BR-892
75	41-6690SH	2 - 2 1/2% FCAN 4 - 2 1/2% FCBN	F	27	41.0	34.3	26.8	700	N.A.
100	41-6695SH	2 - 2 1/2% FCAN 4 - 2 1/2% FCBN	F	27	41.0	34.3	26.8	758	N.A.

Wall mounting requires purchasing an optional Wall Mounting Bracket set.
Complete electrical connections may be found on Page 16.

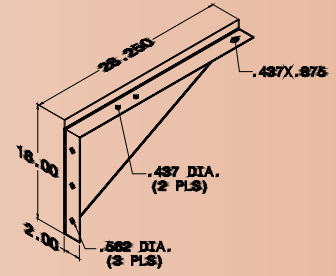
**Single Phase Wall Mounting Brackets
(Sold in Pairs)**



Enclosure Drawing



BR-890
15 to 25 kVA

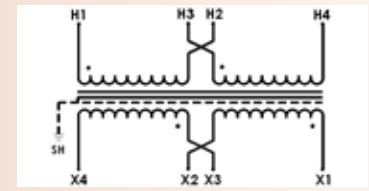


BR-892
37.5 to 50 kVA

Encapsulated Single Phase TP-1 Compliant Transformers

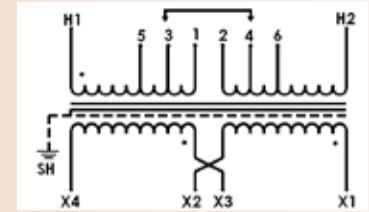
Copper Wound - 45 Series

240 x 480 Volt Primary, 120 / 240 Volt Secondary, 60Hz								
kVA	Catalog Number	Taps	Mtg. Type W = Wall F = Floor	Conn. Dia.	Height A	Width B	Depth C	Est. Ship Weight (Lbs.)
15	45-1070SH	None	W	10	19.4	17.6	11.5	270
15	45-1470SH	2 - 2 ½% FCAN 2 - 2 ½% FCBN	W	11	19.4	17.6	11.5	270
25	45-1075SH	None	W	10	19.4	17.6	11.5	300
25	45-1475SH	2 - 2 ½% FCAN 2 - 2 ½% FCBN	W	11	19.4	17.6	11.5	300

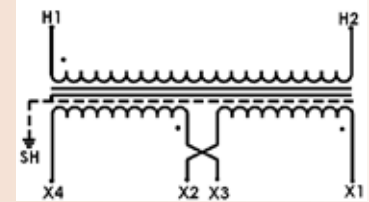


45-10XXSH Series

208 Volt Primary, 120 / 240 Volt Secondary, 60Hz								
kVA	Catalog Number	Taps	Mtg. Type W = Wall F = Floor	Conn. Dia.	Height A	Width B	Depth C	Est. Ship Weight (Lbs.)
15	45-3070SH	None	W	12	19.4	17.6	11.5	270
25	45-3075SH	None	W	12	19.4	17.6	11.5	300

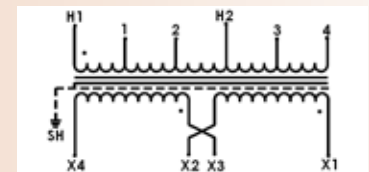


45-14XXSH Series



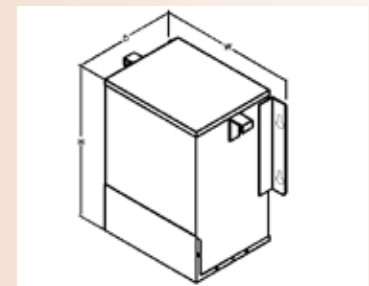
45-30XXSH Series
45-40XXSH Series

277 Volt Primary, 120 / 240 Volt Secondary, 60Hz								
kVA	Catalog Number	Taps	Mtg. Type W = Wall F = Floor	Conn. Dia.	Height A	Width B	Depth C	Est. Ship Weight (Lbs.)
15	45-4070SH	None	W	13	19.4	17.6	11.5	270
25	45-4075SH	None	W	13	19.4	17.6	11.5	300



45-54XXSH Series

600 Volt Primary, 120 / 240 Volt Secondary, 60Hz								
kVA	Catalog Number	Taps	Mtg. Type W = Wall F = Floor	Conn. Dia.	Height A	Width B	Depth C	Est. Ship Weight (Lbs.)
15	45-5470SH	2 - 2 ½% FCAN 2 - 2 ½% FCBN	W	14	19.4	17.6	11.5	270
25	45-5475SH	2 - 2 ½% FCAN 2 - 2 ½% FCBN	W	14	19.4	17.6	11.5	300



Enclosure Drawing

All units are wall mount only.
Complete electrical connections may be found on Page 17.